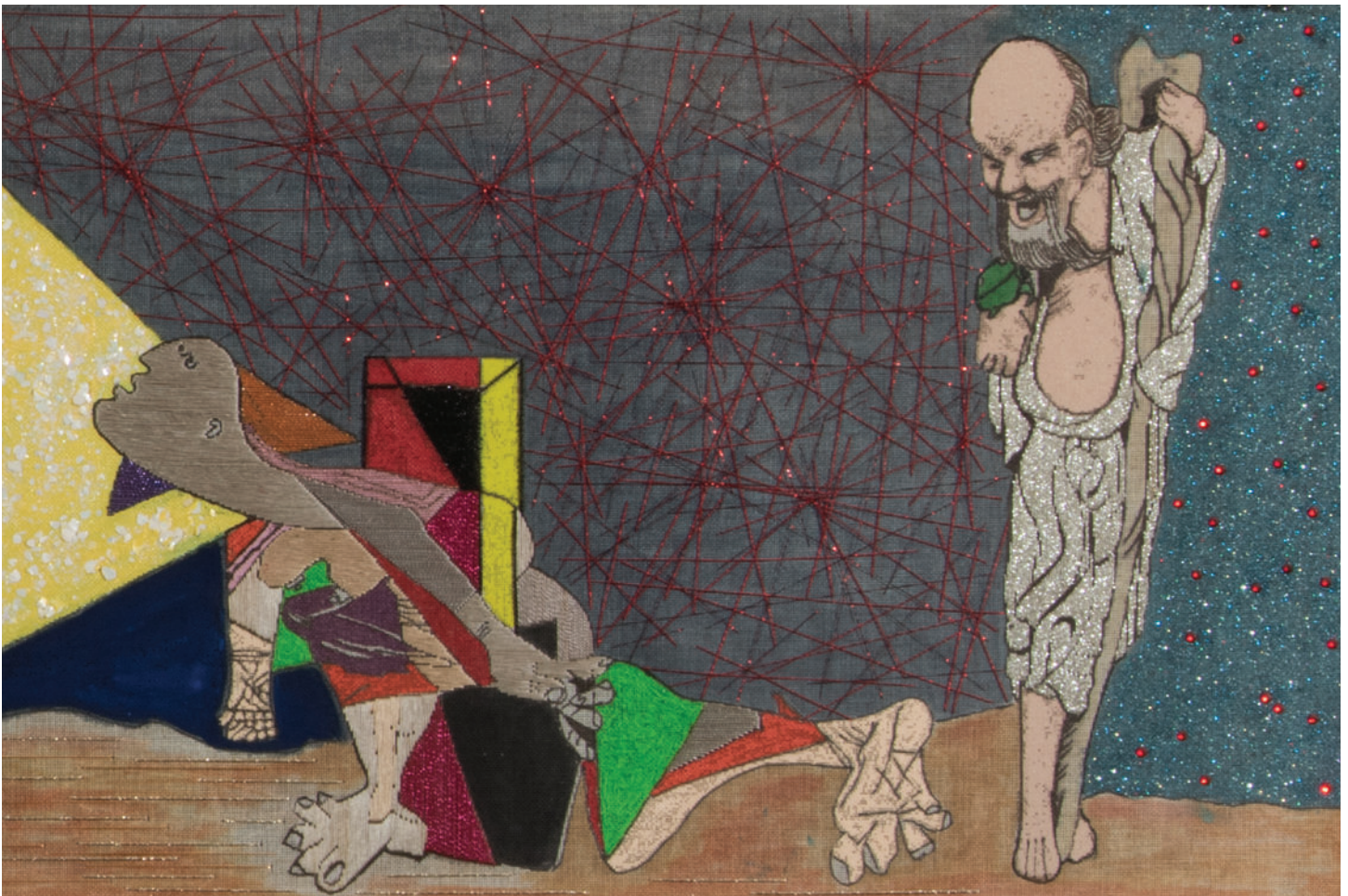


Teacher Guide

Nicolas Moufarrege: Recognize My Sign

November 10, 2018–February 17, 2019



Nicolas Moufarrege. *Narcissix of One and Nick's of the Other* (detail), 1983. Thread, pigment, glitter, beads, and adhesive on needlepoint canvas. Image and work courtesy Nabil Moufarrej and Gulnar "Nouna" Mufarrij.

CAMH.ORG
@camhouston
#atCAMH
#NicolasMoufarrege

Teacher Guide

Nicolas Moufarrege:

Recognize My Sign

November 10, 2018–

February 17, 2019

EXHIBITION OVERVIEW

- Nicolas Moufarrege was born in Alexandria, Egypt to Lebanese Christian parents.
- He received undergraduate and graduate degrees in Chemistry and was a Fulbright Scholar at Harvard University in Cambridge, Massachusetts.
- Moufarrege started exploring embroidery when he wanted to fix a hole in his jeans with a patch and ended up creating his own. He became enamored with the possibilities and how the accumulation of stitches could build an image.
- Moufarrege's career is defined by the places he lived including Beirut, Lebanon; Paris, France; and New York, New York.
- Moufarrege left Beirut for Paris in 1975 in order to flee the Lebanese Civil War. The move to France inspired him to start creating larger works that also combined pigment with embroidery.
- Moufarrege arrived in New York City in 1980 and started experimenting with appropriation, making references to many other artists in his work.
- Moufarrege's life was sadly cut short when, in 1985, he passed away from complications due to AIDS.
- The exhibition, *Nicolas Moufarrege: Recognize My Sign*, is his first solo museum show and brings together nearly forty of the artist's tapestries and paintings.



Nicolas Moufarrege. *Title unknown*, 1984. Thread and pigment on needlepoint canvas. Image and work courtesy Nabil Moufarrej and Gulnar "Nouna" Mufarrij.

Key Questions

- What does appropriation mean? How have other artists used it in their work?
- Nicolas Moufarrege calls these works “paintings” even though they also contain embroidery. What would you call these works? Do they match your definition of paintings?
- Moufarrege moved several times during his artistic career, each move impacted and changed his artistic process. How does place and location impact an artist or creative person? Have you ever moved? What are the differences between places you have lived?
- Moufarrege related to the character of Spiderman whom he references in his work. Are there fictional and non-fictional characters that you relate to?

Curriculum Connections

Visual Art | Nicolas Moufarrege uses appropriation to juxtapose different artists and reveal a variety of meanings. Explore how different artists use appropriation and reference each other’s work. Think about how you might use appropriation to create new meanings and conversations between artists and artworks.

Cultural Competency | What are some examples of visual images that represent different cultures? How are artists influenced by their culture?

History | How did the history of the Middle East and the Lebanese Civil War impact Moufarrege and other people in that region? How do contemporary immigration issues impact artists?



Nicolas Moufarrege. *Languages*, 1980. Thread and pigment on needlepoint canvas. Image and work courtesy Nabil Moufarrej and Gulnar “Nouna” Mufarrij.