

Teacher Guide

Turn On, Tune In, Tap Out

On view | May 13-August 8, 2021



Alec Phipps, *A Trip To The Grocery Store*, 2020. Gouache on bristol board, 16 x 20 inches. Image and work courtesy the artist.

CAMH.ORG
@camhouston
#atCAMH

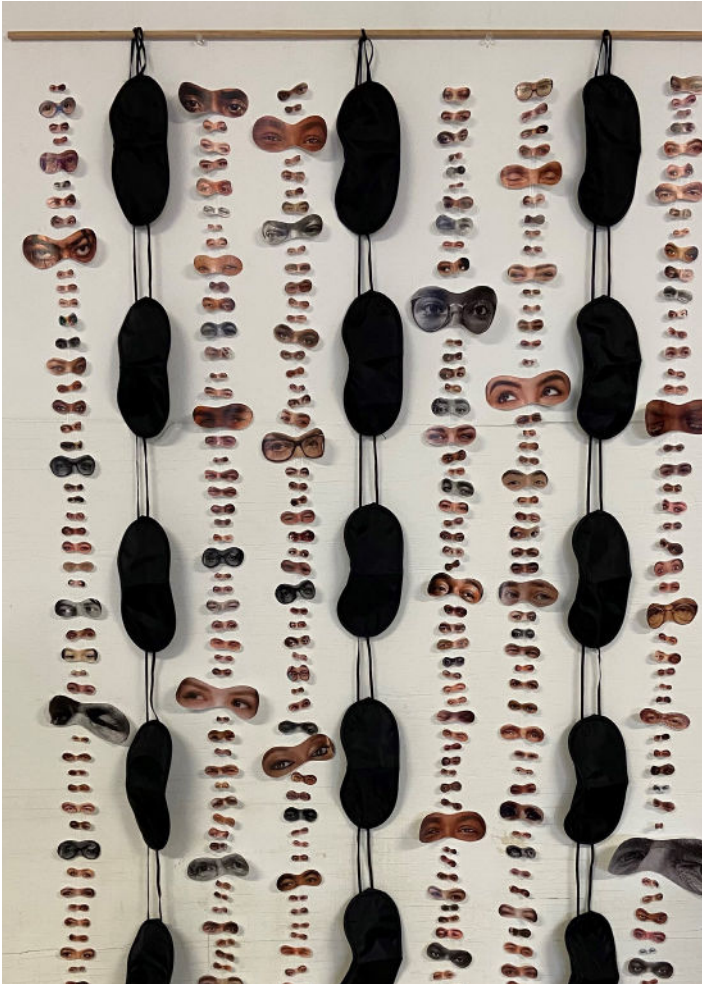
Teacher Guide

Turn On, Tune In, Tap Out

On view | May 13-August 8, 2021

EXHIBITION OVERVIEW

- *Turn On, Tune In, Tap Out* is the twelfth exhibition curated by CAMH's Teen Council.
- CAMH's Teen Council is a group of dedicated high school students who are employed by the Museum to create programming for their peers.
- *Turn On, Tune In, Tap Out* is a group exhibition featuring work by twenty-six Houston-area teen artists.
- The exhibition addresses the world's rapid shift into a virtual space where learning and interactions with others occurred almost exclusively through a digital screen.
- CAMH's Teen Council met, planned, and connected to organize this exhibition almost exclusively in a virtual space.
- The exhibition features sculpture, painting, photography, film, drawing, and more.
- The works in the exhibition respond to this moment with both hope and despair. Some artists in the exhibition have found their voice and power behind the screen, while others feel muted and a loss of control.
- *Turn On, Tune In, Tap Out* is divided into two main sections including how the **Physical Body** has been impacted by this moment and the **Psychological Effects**. The bridge sections between these themes are **Addiction** (to social media and our devices) and the feelings of **Connection vs. Loneliness**.



Eliza Crawford, *Eyes to See*, 2021. Paper, glue, string, and wood, 3 x 5 feet. Image and work courtesy the artist

Key Questions

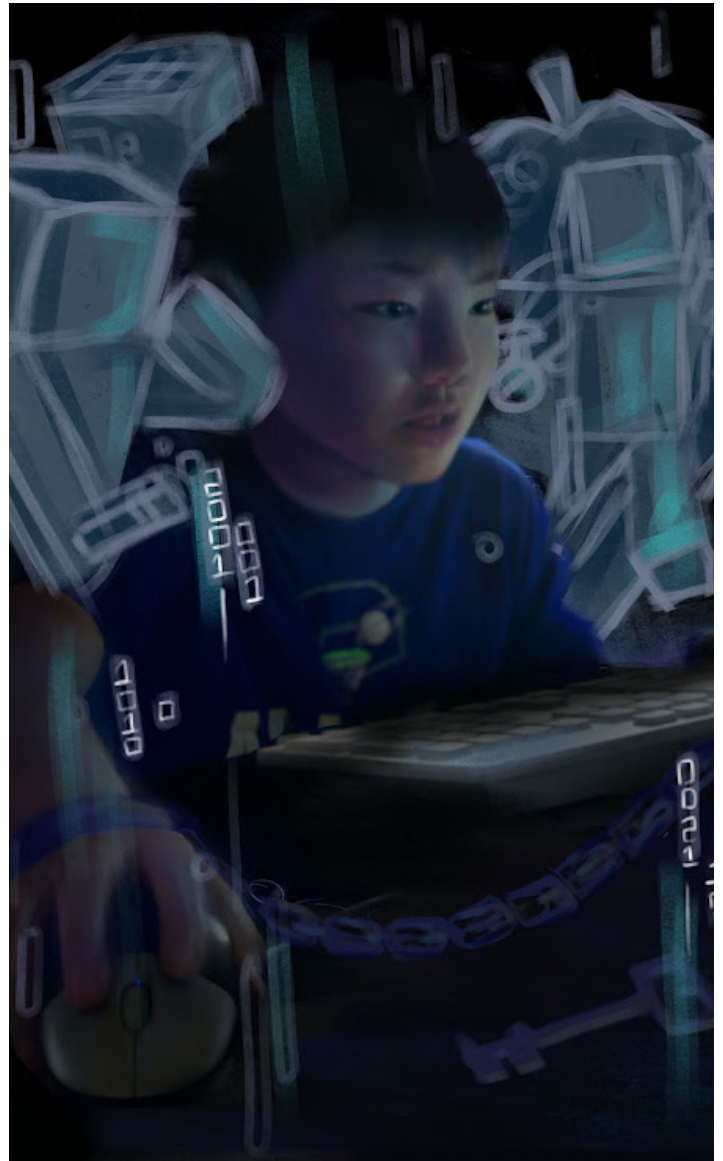
- How do you define “The Screen”?
- How does “The Screen” protect you or hold you back?
- How can you crack “The Screen”?
- How has the global pandemic impacted you both physically and psychological?
- How has your relations to your device and “The Screen” changed over the course of the pandemic?

Curriculum Connections

Social Studies/World History | Research ways humans have communicated with each other around the world and through history. How have humans communicated over long distances? How have these communication systems changed and why?

Technology | How does social media impact yourself, community, and the world? Find out the answer to this questions for people of other generations. How has technology changed how we communicate and connect?

Creative Writing | Many artists in the exhibition repurposed old technologies. Write a story from the perspective of a discarded or old piece of technology.



Guanyi Li, *Screen Lover*, 2021. Digital photographic collage, 14 x 11 inches.
Image and work courtesy the artist