

PRESS RELEASE

Contemporary Arts Museum Houston

EXHIBITION OPENING

***RIGHT HERE, RIGHT NOW:
HOUSTON, VOLUME 2***

August 20–November 27, 2016

***Amy Blakemore: People, Cars & Buildings,
Sculptures, Flowers, and Junk***

Thedra Cullar-Ledford: Lady Part Follies

***Susie Rosmarin—Lines and Grids: The Lost
Decade and Beyond***

OPENING RECEPTION

***Right Here, Right Now:
Houston, Volume 2***

Friday, August 19, 6:30–9PM
Brown Foundation Gallery

HOUSTON, TX (June 20, 2016)— The Contemporary Arts Museum Houston is pleased to present three simultaneous solo exhibitions by Houston-based artists Amy Blakemore, Thedra Cullar-Ledford, and Susie Rosmarin. The presentations are part of the museum’s ongoing series *Right Here, Right Now*, which celebrates our region’s vibrant creative community. Its second iteration showcases the work of three Houston-based artists with decades-long practices here. CAMH’s Director Bill Arning, Senior Curator Valerie Cassel Oliver, and Curator Dean Daderko respectively selected Cullar-Ledford, Rosmarin, and Blakemore.

Blakemore’s, Cullar-Ledford’s, and Rosmarin’s works are visually and conceptually diverse. These artists create moodily poetic photographs, wry and confrontational figurative paintings, and vivid, optically luscious abstractions.

“We know that Houston is a great place for young artists to be based while establishing their practices—a fact we highlighted in the first edition of *Right Here, Right Now* in 2014. For this second edition, we considered artists who have been long-time contributors to our city’s cultural landscape and have established important practices here” says Bill Arning, Director. “We found first-rate artists whose work had blossomed in Houston’s rich cultural ecosystem, and this exhibition highlights work by three of them.”

RIGHT HERE, RIGHT NOW: HOUSTON, VOLUME 2

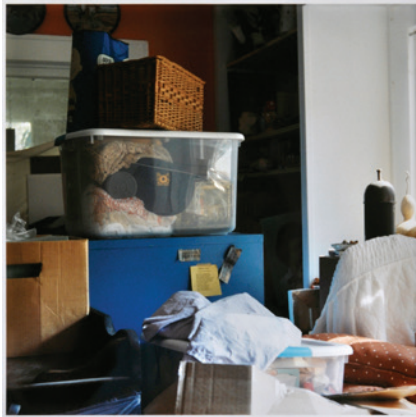
EXHIBITION OPENING

PRESS RELEASE

AMY BLAKEMORE

PEOPLE, CARS & BUILDINGS, SCULPTURES, FLOWERS, AND JUNK

CURATED BY DEAN DADERKO, CURATOR



Amy Blakemore
Someone's Living Room, 2010
Chromogenic print, ed. 10
12 x 12 inches
Courtesy the artist and Inman Gallery,
Houston

Amy Blakemore's photographs capture perfectly affective moments. Her ongoing exploration of the familiar photographic genres of portraiture, landscape, and still life has resulted in a body of fascinating photographs marked by telling difference. Full of hazy focus and quotidian awkwardness, Blakemore's photographs draw viewers into suggestive atmospheres.

Blakemore is an inveterate collector, and the desire to collect informs this exhibition's organizational structure. Common subjects that have passed before Blakemore's lens over nearly three decades are gathered together. The thematic groupings People, Cars & Buildings, and Flowers demonstrate Blakemore's unique approaches to portraiture, landscapes, and still life. The groups Sculptures and Junk offer evidence of the artist's more personal passions.

Whatever her subject matter, Blakemore creates uniquely beautiful images. With an artistic vision that is by turns painterly, elegiac, humorous, and suffused with melancholy, Amy Blakemore might be called a painter's photographer. She balances the erratic effects produced by cheap plastic cameras with remarkable darkroom precision. Blakemore is a gifted colorist who appreciates the everyday dramatics of light and shadow dappling a stuccoed wall, dusky shadows, or apples mouldering on the grass beneath a tree. These groupings of photographs offer viewers the opportunity to compare and contrast images, and to be drawn deeper into Blakemore's world.

ABOUT THE ARTIST

Amy Blakemore (b. 1958, Tulsa, OK) received a B.S. in Psychology and a B.A. in Art from Drury College (now Drury University) in Springfield, MO, and an M.F.A from the University of Texas at Austin. She has lived and worked in Houston since 1985, when she arrived in the city to be an Artist in Residence at the Museum of Fine Arts Houston's Core Program. Blakemore's photographs have been seen in the Whitney Museum of American Art's 2006 biennial exhibition Day for Night. Her work has also been exhibited at the Museum of Fine Arts Houston (2009), the Seattle Art Museum (2010), and the Oklahoma City Museum of Art (2011). Art League Houston honored Blakemore as the Texas Artist of the Year in 2015. Blakemore has exhibited with Inman Gallery in Houston for more than two decades.

PRESS RELEASE

THEDRA CULLAR-LEDFORD
LADY PART FOLLIES

CURATED BY BILL ARNING, DIRECTOR



Thedra Cullar-Ledford
Proud Mary, 2010
Oil on canvas
60 x 48 inches
Private Collection

Thedra Cullar-Ledford has been one of the biggest personalities and presences on the Houston scene for over a decade. A quintessential bad girl, Cullar-Ledford pairs humor with aggressive feminist statements and explorations of the perversity of Texas's masculinist iconography. Her work has been widely exhibited and collected. But in 2013 things got real when in her attempt to donate a kidney to a friend she was found to have a form of breast cancer and required a double mastectomy. Suddenly, she found herself learning a social political landscape in which a largely male medical establishment was telling women patients what to do, think, and feel about their bodies. She encountered a community of breast cancer activists who, in the words of the artist, felt no compunction to surgically reconstruct their bodies to allow others the freedom to not think about cancer.

In Cullar-Ledford's first solo museum exhibition featuring sculptures, photographs, video, and performance, in addition to her bravura paintings, we see the young artist present her first mature works about Texas, made while she was attending Christ Church in Oxford, England.

ABOUT THE ARTIST

Thedra Cullar-Ledford was born in Abilene, Texas. She received her B.F.A. in Painting from California College of Arts and Crafts in 1992 and her M.F.A. in Printmaking and Sculpture from Oxford University in the UK in 1994. Her solo exhibitions include *Drawing the Eye to Nothingness* (2015); *Small Stains, Big Problems* (2013); *Living Dolls* (2012); *Domicile* (2003); *Biometrica* (2002); *Other People's Lives* (2000); *Encase: To Wrap Up in Something Solid* (1998); *Contain, Order, Move: The Box as Fundamental Form* (1997); and *Cradle to the Grave* (1993).

Group exhibitions she has participated in include *Powerful Babies: Keith Haring's Impact on Artists Today* (2015); *Confluence* (2014); *Hullabaloo: Holiday ShaBang!* (2013); *Spring Introduction* (2013); *10 Houston Artists: An Invasion of Space for 2011 Contemporary Art Month* (2011); *H2O Houston to Hyderabad* (2011); *Five Texas Artists: A Portrait Series* (2010); among others.

PRESS RELEASE

SUSIE ROSMARIN

LINES AND GRIDS: THE LOST DECADE AND BEYOND
CURATED BY VALERIE CASSEL OLIVER, SENIOR CURATOR

Susie Rosmarin's paintings are born out of strategies to defy the two-dimensional frame. Her ability to achieve the dynamism of optical illusions is rooted in her extraordinary talents to affect movement with both color and composition. Her use of mathematical formula in the creation of her paintings and sculpture enables her to create by hand layered patterns and color that seem machine generated.

While her work has been appropriately situated within the spectrum of Op Art, she is a methodical landscape painter whose abstract compositions echo traditions of light and color. This exhibition brings together works created at various stages of her career, allowing audiences to experience the evolution of her craft. Envisioned as a mini-survey, the exhibition spans a thirty-year period but focuses on Rosmarin's early work in painting, sculpture, and photography from 1988 to 2000. Additional works from subsequent decades, including the artist's most recent digital generated works, are featured in the exhibition.

ABOUT THE ARTIST

Susie Rosmarin was born in Brownsville, Texas in 1950. She received her B.A. from University of St. Thomas in Houston in 1973 and her M.F.A. from Pratt Institute in New York in 1981. Her solo exhibitions include *Pop-Up* (2013); *Some New Paintings* (2013); and *Paint By Numbers* (2002).



Susie Rosmarin
Untitled (Aluminum Grid), 1988
Aluminum foil, stainless steel mesh
22 x 20 x 4 1/2 inches
Courtesy the artist and Texas Gallery, Houston

ABOUT RIGHT HERE, RIGHT NOW

In 2014, CAMH launched the series *Right Here, Right Now* with solo presentations of work by artists Debra Barrera, Nathaniel Donnett, and Carrie Marie Schneider. The series is meant to highlight artistic developments taking shape in studios across the city, asserting that Houston, with its manageable cost of living and affordable studio space, allows innovators to maintain practices at a highly professional level. The exhibitions bring work by some of Houston's most talented art makers to both area audiences for whom their work may be familiar, as well as act as an introduction to wider audiences outside the region.

PUBLIC PROGRAMS

All events are free and open to the public and take place at the Contemporary Arts Museum Houston unless otherwise noted. For complete listings and current information, please check www.camh.org.

OPENING RECEPTION

Friday, August 19, 6:30–9PM

IN CONVERSATION

Join us for conversations between the artists and curators

Saturday, August 20, 2PM

Thedra Cullar-Ledford with Bill Arning

Saturday, September 17, 2PM

Amy Blakemore with Dean Daderko

Thursday, October 27, 6:30PM

Susie Rosmarin with Valerie Cassel Oliver

MUSIQA LOFT CONCERT

Thursday, September 8, 6:30PM

OPEN STUDIO

Drop-in, hands-on activities related to current exhibitions for creatives of all-ages.

First Saturdays, 2–4PM

September 3 | Sketch your heart out in a STRANGE DOLL STILL LIFE DRAWING SESSION in homage to the work of artist Thedra Cullar-Ledford.

October 1 | Make your own OP-ART TOTE BAG by screen printing various lines and grids inspired by the work of artist Susie Rosmarin.

November 5 | Explore PHOTO-INSPIRED FUN with our friends at the Houston Center for Photography inspired by artist Amy Blakemore.

FAMILY DAY

Saturday, October 22, 1–4PM

PUBLICATION

Right Here, Right Now: Houston, Volume 2 will be accompanied by a catalogue designed by Don Quaintance featuring essays by Bill Arning and Dean Daderko on the work of Thedra Cullar-Ledford and Amy Blakemore, respectively, an interview by Valerie Cassel Oliver with artist Susie Rosmarin, color and black-and-white illustrations of the artists' work, and a biography on each artist.

This catalogue is made possible by a grant from The Brown Foundation, Inc.

EXHIBITION SUPPORT

This exhibition is made possible by the patrons, benefactors, and donors to the Museum's Friends of Steel Exhibitions: Director's Circle - Chinhui Juhn and Eddie Allen, Fayez Sarofim, and Ms. Louisa Stude Sarofim; Curator's Circle - Dillon Kyle Architecture, Inc., Mr. and Mrs. I. H. Kempner III, and Robin and Andrew Schirrmeister; Major Exhibition Circle - A Fare Extraordinaire, Bergner and Johnson Design, Jereann Chaney, Marita and J.B. Fairbanks, Barbara and Michael Gamson, Blakely and Trey Griggs, George and Mary Josephine Hamman Foundation, Leslie and Mark Hull, Jackson and Company, KPMG, LLP, Beverly and Howard Robinson, Yellow Cab Houston, and Michael Zilkha.

Right Here, Right Now: Houston, Volume 2 is supported in part by Mary and Marcel Barone, Julie Kinzelman and Christopher Tribble, and Dillon Kyle and Sam Lasseter.

EDUCATION SUPPORT

The Museum's education and outreach programming is made possible by the patrons, benefactors, and donors to its Families of Steel Programming: Vera and Andy Baker, Elizabeth Howard Crowell, Melissa and Albert J. Grobmyer IV, Mady and Ken Kades Kinder Morgan Foundation, Dillon Kyle Architecture, Inc., Leticia Loya, Marian and Speros Martel Foundation Endowment, M.D. Anderson Foundation, Andrew R. McFarland, Nordstrom, Cabrina and Steven Owsley, Texas Commission on the Arts, and David and Marion Young.

Teen Council is supported by Ms. Louisa Stude Sarofim.

PRESS RELEASE**GENERAL SUPPORT**

Funding for the Museum's operations through the Fund for the Future is made possible by generous grants from Chinhui Juhn and Eddie Allen, Jereann Chaney, Marita and J.B. Fairbanks, Jo and Jim Furr, Barbara and Michael Gamson, Brenda and William Goldberg, Leticia Loya, Fayez Sarofim, Robin and Andrew Schirrmeister, and David and Marion Young.

The Museum's operations and programs are made possible through the generosity of the Museum's trustees, patrons, members, and donors. The Contemporary Arts Museum Houston receives partial operating support from The Brown Foundation, Inc., Houston Endowment, the City of Houston through the Houston Museum District Association, the National Endowment for the Arts, the Texas Commission on the Arts, The Wortham Foundation, Inc. and artMRKT Productions. CAMH also thanks its artist benefactors for their support including Derrick Adams, Richard Aldrich, John Bankston, Tad Beck, Chris Beckman, Lucas Blalock, Hiyme Brummett, Christopher Cascio, Mel Chin, JooYoung Choi, Joseph Cohen, Thedra Cullar-Ledford, Abigail DeVille, James Drake, James Elaine, Russell Etchen, Steven Evans, Benjamin Fredrickson, Coco Fusco, Camille Henrot, Aaron Holz, Jae Ko, Scooter LaForge, Judy Ledgerwood, Shaun Leonardo, Julian Lorber, Troy Michie, Marilyn Minter, Nic Nicosia, Joe Joe Orangias, Joyce Pensato, Gavin Perry, Jack Pierson, Laure Provost, Ryan Reitmeyer, Jacolby Satterwhite, Bret Shirley, Melanie Smith, A.L. Steiner, Rodrigo Valenzuela, Jeffrey Vallance, Nick Vaughan & Jake Margolin, Carrie Mae Weems, Michael Wilson, Joe Wooten, and Haegue Yang.

United is the official airline of the Contemporary Arts Museum Houston.

CAMH MISSION

The Contemporary Arts Museum Houston is a leading destination to experience innovative art. CAMH actively encourages public engagement with its exhibitions through its educational programs, publications, and online presence.

ALWAYS FRESH, ALWAYS FREE

GENERAL INFORMATION

The Contemporary Arts Museum Houston is located at 5216 Montrose Boulevard, at the corner of Montrose and Bissonnet, in the heart of Houston's Museum District. Hours are Tuesday, Wednesday, and Friday 10AM–7PM, Thursday 10AM–9PM, Saturday 10AM–6PM, and Sunday 12PM–6PM. Admission is always free. For more information, visit www.camh.org or call 713 284 8250.